

# LV Network - Task #463

## Kiểm tra các server monitor

29-01-2024 20:31 - pham vu

<b>Trạng thái:</b>	Closed	<b>Bắt đầu:</b>	29-01-2024
<b>Mức ưu tiên:</b>	Normal	<b>Hết hạn:</b>	03-02-2024
<b>Phân công cho:</b>	Tien Pham	<b>Tiến độ:</b>	100%
<b>Chủ đề:</b>		<b>Thời gian ước lượng:</b>	0:00 giờ
<b>Phiên bản:</b>		<b>Thời gian:</b>	0:00 giờ
<b>Mô tả</b> mục tiêu: đảm bảo các server monitor hoạt động ổn cảnh báo bình thường			

### Lược sử

#1 - 29-01-2024 20:32 - pham vu

- Kiểu vấn đề thay đổi từ Bug tới Task

#2 - 02-02-2024 08:05 - pham vu

- Phân công cho thay đổi từ pham vu tới Tien Pham

#3 - 02-02-2024 10:54 - Tien Pham

- Tập tin clipboard-202402020852-ez1jh.png được thêm

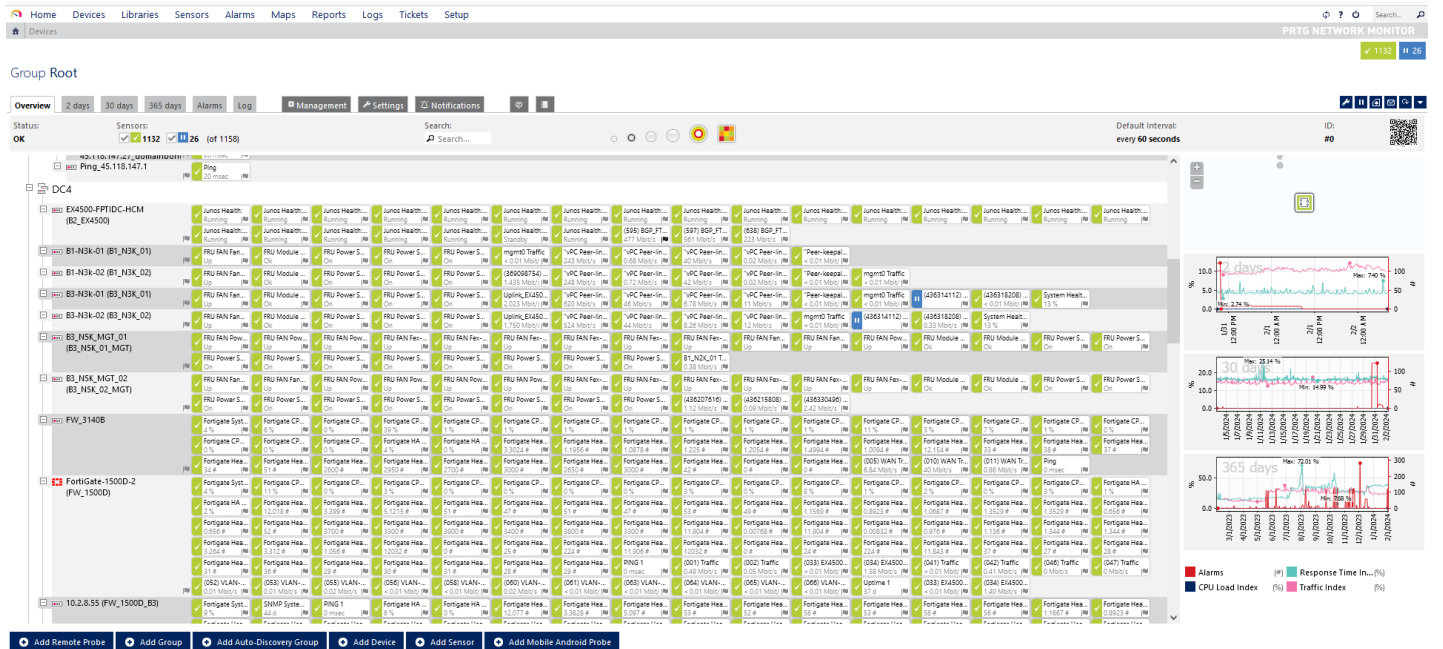
- Tập tin clipboard-202402020853-a7asb.png được thêm

- Tập tin clipboard-202402020853-3o3qh.png được thêm

- Tập tin clipboard-202402020854-4o9wl.png được thêm

- Tập tin clipboard-202402021054-tzxuq.png được thêm

### PRTG FPT\_HCM



### FPT\_HN

### Group Root

Overview 2 days 30 days 365 days Alarms Log Management Settings Notifications

Status: OK Sensors: 201 6 2 1 (of 210) Search: Search... Default Interval: every 60 seconds ID: #0

- FPT\_HN
  - Sflow
    - Sflow\_ALL
    - Monitor\_KH
      - Device
      - Sflow\_MGT
      - Ping 45.118.147.27
      - Ping GW\_45.118.147.1
    - Probe Device
      - Core Health
      - Probe Health
      - System Health
      - DisFree
      - IntelX 8037...
    - FPT\_HN
      - EX4500-FPT-HN-10.3.8.1
        - Junos Health...
        - E1\_N3K\_01-10.3.8.10
          - FRU FAN Fan...
          - FRU FAN Fan...
          - FRU Power S...
          - FRU Power S...
          - FRU Power S...
          - FRU Power S...
          - VPC-Peer-In...
          - Members-vP...
          - Members-vP...
          - mgmt0 Traffic...
        - E1\_N3K\_02-10.3.8.11
          - FRU FAN Fan...
          - FRU FAN Fan...
          - FRU Power S...
          - FRU Power S...
          - FRU Power S...
          - FRU Power S...
          - VPC-Peer-In...
          - Members-vP...
          - Members-vP...
          - mgmt0 Traffic...
        - C14\_N3K\_01-10.3.8.15
          - FRU FAN Fan...
          - FRU FAN Fan...
          - FRU Power S...
          - FRU Power S...
          - FRU Power S...
          - FRU Power S...
          - VPC-Peer-In...
          - Members-vP...
          - Members-vP...
          - mgmt0 Traffic...
        - C14\_N3K\_02-10.3.8.14
          - FRU FAN Fan...
          - FRU FAN Fan...
          - FRU Power S...
          - FRU Power S...
          - FRU Power S...
          - FRU Power S...
          - VPC-Peer-In...
          - Members-vP...
          - Members-vP...
          - mgmt0 Traffic...
        - C15\_N3K\_01-10.3.8.16
          - FRU FAN Fan...
          - FRU FAN Fan...
          - FRU Power S...
          - FRU Power S...
          - FRU Power S...
          - FRU Power S...
          - VPC-Peer-In...
          - Members-vP...
          - Members-vP...
          - mgmt0 Traffic...
        - C15\_N3K\_02-10.3.8.17
          - Sensors
        - EX3300-FPT-HN-10.3.8.24
          - Junos Health...
          - Junos Health...
          - Junos Health...
          - Junos Health...
          - Junos Health...
          - Junos Health...
          - Junos Health...
          - Junos Health...
          - Junos Health...
          - Junos Health...
          - Junos Health...
          - Junos Health...
          - Junos Health...
          - Junos Health...
          - Junos Health...
          - Junos Health...
          - Junos Health...
        - FW\_80D\_HN-10.32.1.1
          - Ping
        - FW\_80D\_01-192.168.200.1
          - Ping
        - C15-MGT-01
          - Ping

Alarms Response Time In... CPU Load Index Traffic Index

### CMC\_Q9\_HCM

Overview 2 days 30 days 365 days Alarms Log Management Settings Notification Triggers

88 6 (of 94) Search...

- Root
  - CMC\_HCM
    - Probe Device
      - Core Health
      - Probe Health
      - System Health
      - Add Sensor
    - GK1\_CMC\_Q9
      - GK1\_N3K\_01
        - FRU FAN Fan... Up
        - FRU FAN Fan... Up
        - FRU FAN Powe... Up
        - FRU FAN Fan... Up
        - FRU FAN Fan... Up
        - FRU Module 3... Ok
        - FRU Power Su... On
        - FRU Power Su... On
        - FRU Power Su... On
        - VPC\_PEERLIN... 0.15 Mbit/s
        - VPC\_PEERLIN... 0.16 Mbit/s
        - VPC\_KEEPALL... < 0.01 Mbit/s
        - mgmt0 Traffic < 0.01 Mbit/s
        - Add Sensor
      - GK1\_N3K\_02
        - FRU FAN Fan... Up
        - FRU FAN Fan... Up
        - FRU FAN Powe... Up
        - FRU FAN Fan... Up
        - FRU FAN Fan... Up
        - FRU Module 3... Ok
        - FRU Power Su... On
        - FRU Power Su... On
        - FRU Power Su... On
        - VPC\_PEERLIN... 0.16 Mbit/s
        - VPC\_PEERLIN... 0.18 Mbit/s
        - VPC\_KEEPALL... < 0.01 Mbit/s
        - mgmt0 Traffic < 0.01 Mbit/s
        - Add Sensor
      - GK1\_ARISTA\_01
        - SNMP System ... 0
        - Ping 0 msec
        - (003) downLpo... 54 Mbit/s
        - (004) downLpo... 41 Mbit/s
        - (005) BGP\_CM... 70 Mbit/s
        - (001) peerLink... 8.63 Mbit/s
        - (002) peerLink... 8.12 Mbit/s
        - Add Sensor
      - GK1\_ARISTA\_02
        - SNMP System ... 230 d
        - Ping 0 msec
        - (003) downLpo... 7.82 Mbit/s
        - (004) downLpo... 11 Mbit/s
        - (005) BGP\_CM... 0.03 Mbit/s
        - (001) peerLink... 9.45 Mbit/s
        - (002) peerLink... 8.14 Mbit/s
        - Add Sensor
      - SFLOW
        - 103.2.2.
      - FW\_800C
        - Fortigate Syste... 3%
        - Fortigate CPU ... 5%
        - Fortigate CPU ... 4%
        - Fortigate CPU ... 4%
        - Fortigate CPU ... 4%
        - Fortigate CPU ... 4%
        - Fortigate CPU ... 4%
        - Fortigate HA ... 4%
        - Fortigate HA ... 0%
        - Fortigate HA ... 7.100 #
        - Fortigate Healt... 7.600 #
        - Fortigate Healt... 7.900 #
        - Fortigate Healt... 7.900 #
        - Fortigate Healt... 7.900 #
        - Fortigate Healt... 7.900 #
        - Fortigate Healt... 7.900 #
        - Fortigate Healt... 7.900 #
        - Fortigate Healt... 7.900 #
        - Fortigate Healt... 7.900 #
        - (027) WAN1 Tr... 64 Mbit/s
        - (028) LAN1 Tr... 69 Mbit/s
        - Add Sensor
      - PingGW\_FPT\_HCM
        - 45.119.80.1
          - Ping 2 msec
          - Add Sensor
        - 45.119.81.1
          - Ping\_45.119.8... 2 msec
          - Add Sensor

### CMC\_Q7\_HCM



