

## 31. GIẢI PHÁP-TESTING - Task #1133

### Monitor tài nguyên server RAM, CPU server FSI

28-08-2024 08:58 - Minh Pham

<b>Trạng thái:</b>	Closed	<b>Bắt đầu:</b>	25-08-2024
<b>Mức ưu tiên:</b>	Normal	<b>Hết hạn:</b>	01-09-2024
<b>Phân công cho:</b>	Minh Pham	<b>Tiến độ:</b>	0%
<b>Chủ đề:</b>		<b>Thời gian ước lượng:</b>	0:00 giờ
<b>Phiên bản:</b>		<b>Thời gian:</b>	0:00 giờ

#### Mô tả

Mục tiêu :

Monitor tài nguyên server RAM, CPU

Cảnh báo slack khi host down, reboot

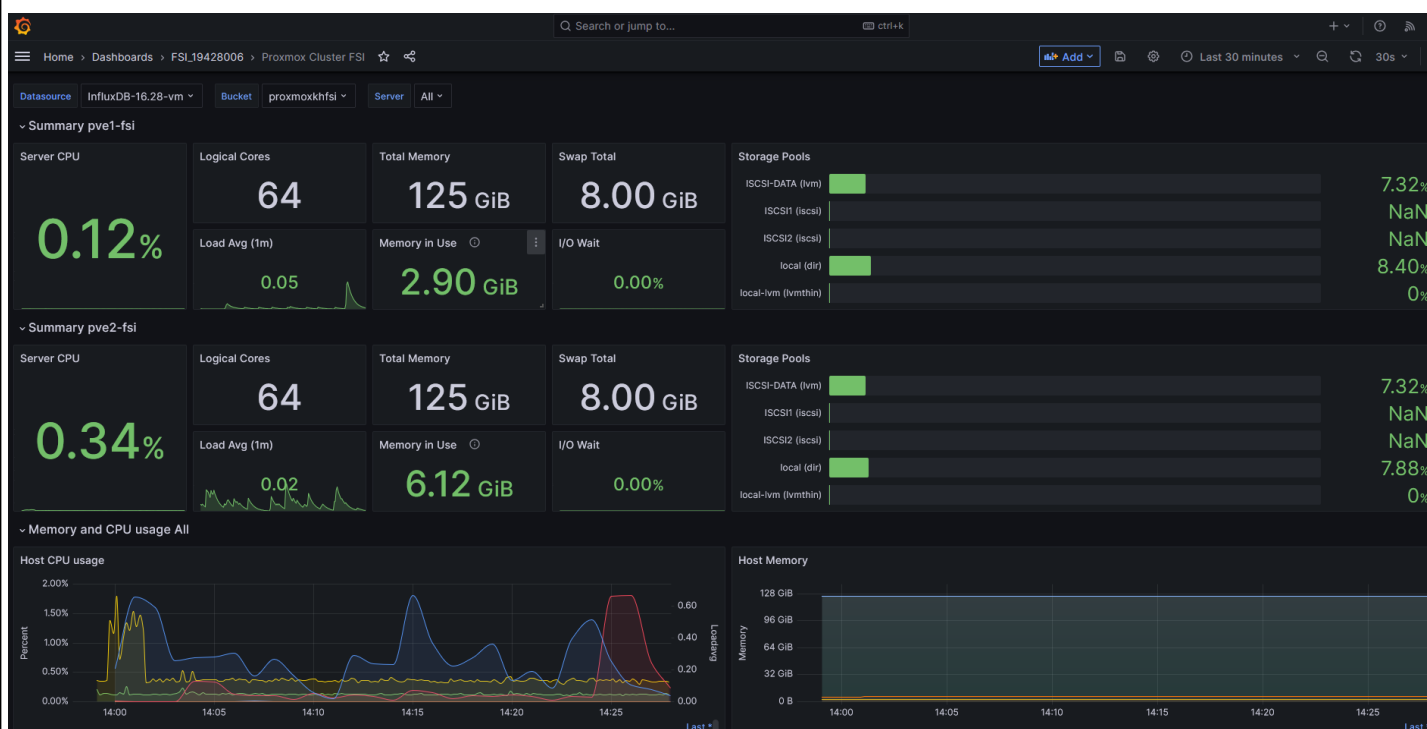
Kết quả:

Link monitor tài nguyên server RAM, CPU

<https://monitor-service.longvan.net/d/lfgdXjtnk/proxmox-cluster-fsi?orgId=1&refresh=30s>

User: FSI\_19428006

Pass: FSI\_19428006



Add monitor host up down trên slack

<input type="checkbox"/>	Host	Name ▲	Last check	Last value	Change	Tags	Info
<input type="checkbox"/>	ProxmoxCluster-10.2...	Proxmox: API service status <sup>?</sup>	7h 6m 37s	OK (200)		component: system	<a href="#">Graph</a>
<input type="checkbox"/>	ProxmoxCluster-10.2...	Proxmox: Cluster [FSI]: Quorate <sup>?</sup>	10m 46s	Yes (1)		cluster: FSI component: system	<a href="#">Graph</a>
<input type="checkbox"/>	ProxmoxCluster-10.2...	Proxmox: Get cluster resources <sup>?</sup>				component: raw	<a href="#">History</a>
<input type="checkbox"/>	ProxmoxCluster-10.2...	Proxmox: Get cluster status <sup>?</sup>				component: raw	<a href="#">History</a>
<input type="checkbox"/>	ProxmoxCluster-10.2...	Proxmox: Node [pve1-fsi]: CPU, iowait <sup>?</sup>	1m 37s	0.008855 %	-0.0007527 %	component: cpu node: pve1-fsi	<a href="#">Graph</a>
<input type="checkbox"/>	ProxmoxCluster-10.2...	Proxmox: Node [pve1-fsi]: CPU, loadavg <sup>?</sup>	1m 37s	38.5 %	+21.8333 %	component: cpu node: pve1-fsi	<a href="#">Graph</a>
<input type="checkbox"/>	ProxmoxCluster-10.2...	Proxmox: Node [pve1-fsi]: CPU, usage <sup>?</sup>	1m 37s	0.4365 %	+0.07932 %	component: cpu node: pve1-fsi	<a href="#">Graph</a>
<input type="checkbox"/>	ProxmoxCluster-10.2...	Proxmox: Node [pve1-fsi]: Incoming data, rate <sup>?</sup>	1m 37s	4.93 Mbps	+1.4 Mbps	component: network node: pve1-fsi	<a href="#">Graph</a>
<input type="checkbox"/>	ProxmoxCluster-10.2...	Proxmox: Node [pve1-fsi]: Kernel version <sup>?</sup>	19h 8m 16s	Linux 6.8.4-2-pve ...		component: system	<a href="#">History</a>
<input type="checkbox"/>	ProxmoxCluster-10.2...	Proxmox: Node [pve1-fsi]: Localtime <sup>?</sup>	1m 8s	2024-08-28 16:0...	+00:00:46	component: system node: pve1-fsi	<a href="#">Graph</a>
<input type="checkbox"/>	ProxmoxCluster-10.2...	Proxmox: Node [pve1-fsi]: Memory, total <sup>?</sup>	4m 40s	125.39 GB		component: memory node: pve1-fsi	<a href="#">Graph</a>
<input type="checkbox"/>	ProxmoxCluster-10.2...	Proxmox: Node [pve1-fsi]: Memory, used <sup>?</sup>	1m 37s	35.55 GB	-6 MB	component: memory node: pve1-fsi	<a href="#">Graph</a>
<input type="checkbox"/>	ProxmoxCluster-10.2...	Proxmox: Node [pve1-fsi]: Outgoing data, rate <sup>?</sup>	1m 37s	232.05 Kbps	-13.04 Kbps	component: network node: pve1-fsi	<a href="#">Graph</a>
<input type="checkbox"/>	ProxmoxCluster-10.2...	Proxmox: Node [pve1-fsi]: PVE version <sup>?</sup>	19h 8m 16s	pve-manager/8.2...		component: system	<a href="#">History</a>
<input type="checkbox"/>	ProxmoxCluster-10.2...	Proxmox: Node [pve1-fsi]: Root filesystem, total <sup>?</sup>	4m 40s	93.93 GB		component: storage node: pve1-fsi	<a href="#">Graph</a>
<input type="checkbox"/>	ProxmoxCluster-10.2...	Proxmox: Node [pve1-fsi]: Root filesystem, used <sup>?</sup>	1m 37s	7.51 GB	+27.33 KB	component: storage node: pve1-fsi	<a href="#">Graph</a>
<input type="checkbox"/>	ProxmoxCluster-10.2...	Proxmox: Node [pve1-fsi]: RRD statistics <sup>?</sup>				component: raw	<a href="#">History</a>
<input type="checkbox"/>	ProxmoxCluster-10.2...	Proxmox: Node [pve1-fsi]: Status <sup>?</sup>	10m 46s	Online (1)		component: cluster node: pve1-fsi	<a href="#">Graph</a>
<input type="checkbox"/>	ProxmoxCluster-10.2...	Proxmox: Node [pve1-fsi]: Status <sup>?</sup>				component: raw	<a href="#">History</a>
<input type="checkbox"/>	ProxmoxCluster-10.2...	Proxmox: Node [pve1-fsi]: Swap filesystem, total <sup>?</sup>	4m 40s	8 GB		component: storage node: pve1-fsi	<a href="#">Graph</a>
<input type="checkbox"/>	ProxmoxCluster-10.2...	Proxmox: Node [pve1-fsi]: Swap filesystem, used <sup>?</sup>	4m 40s	0 B		component: storage node: pve1-fsi	<a href="#">Graph</a>
<input type="checkbox"/>	ProxmoxCluster-10.2...	Proxmox: Node [pve1-fsi]: Time <sup>?</sup>	1m 8s	2024-08-28 09:0...	+00:00:46	component: system node: pve1-fsi	<a href="#">Graph</a>
<input type="checkbox"/>	ProxmoxCluster-10.2...	Proxmox: Node [pve1-fsi]: Time <sup>?</sup>				component: raw	<a href="#">History</a>
<input type="checkbox"/>	ProxmoxCluster-10.2...	Proxmox: Node [pve1-fsi]: Time zone <sup>?</sup>	7h 8m 8s	Asia/Ho_Chi_Minh		component: system node: pve1-fsi	<a href="#">History</a>
<input type="checkbox"/>	ProxmoxCluster-10.2...	Proxmox: Node [pve1-fsi]: Uptime <sup>?</sup>	1m 16s	19:23:18	+00:01:00	component: system	<a href="#">Graph</a>
<input type="checkbox"/>	ProxmoxCluster-10.2...	Proxmox: Node [pve2-fsi]: CPU, iowait <sup>?</sup>	1m 28s	0.002194 %	+0.0000725...	component: cpu node: pve2-fsi	<a href="#">Graph</a>

## Lược sử

### #1 - 28-08-2024 08:59 - Minh Pham

- Mô tả cập nhật

### #2 - 28-08-2024 09:01 - Minh Pham

- Tập tin clipboard-202408280900-j2mbn.png được thêm

- Tập tin clipboard-202408280900-wsiw0.png được thêm

- Mô tả cập nhật

### #3 - 28-08-2024 09:03 - Minh Pham

- Tập tin clipboard-202408280902-3kibz.png được thêm

- Chủ đề thay đổi từ Monitor server FSI tới Monitor tài nguyên server RAM, CPU server FSI

- Mô tả cập nhật

### #4 - 28-08-2024 09:03 - Minh Pham

- Trạng thái thay đổi từ In Progress tới Closed

## Tập tin

clipboard-202408280900-j2mbn.png	184 KB	28-08-2024	Minh Pham
clipboard-202408280900-wsiw0.png	184 KB	28-08-2024	Minh Pham
clipboard-202408280902-3kibz.png	101 KB	28-08-2024	Minh Pham